

Metal free systems at SBO

SBO Dental Laboratory Ltd

120a Marylebone Lane
London W1U 2QG

020 7486 2097

www.sbodentallaboratory.co.uk

lab@sbodentallaboratory.co.uk

Precision meets Art ©

Key:



Partial Crown



Full crown single

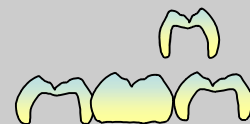


Veneer

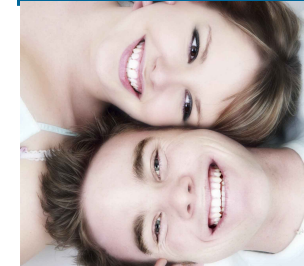


Bridge

<u>Restoration</u>	Strength	Description	Indications	Translucency	Contra-indication	Fit technique
i-esthetic ®	154MPa	Feldspatic porcelain with no high strength core, pure ceramic restoration. CAD/CAM designed and milled dentine with enamel ceramics layered on top	High translucence provides a really natural result. Veneers, inlays and full anterior crowns for maximum aesthetic result	High	i-esthetic is nice and translucent. Dark teeth can show through, do not use for dark teeth or on root treated teeth. Regular veneers (refractory technique) are better for dark teeth as we can layer in some opaque	Dentine bonded only. 5 year guarantee if fitted with Mirage II, available from SBO.
e.max ®	400 MPa	Lithium disilicate porcelain with no high strength core. The ceramic itself is however intrinsically strong. CAD/CAM designed and milled with enamel ceramics layered on top	Medium translucence provides a really natural result. Full crowns or partial coverage crowns when maximum strength is required but when dentine bonded is required	Medium/High	Very dark teeth can not be masked, but emax is more opaque than i-esthetic.	SBO recommend dentine bonded only, although Ivoclar also state that e.max can be conventionally cemented. If conventional cementation techniques are to be used we recommend using zirconia due to its higher strength. 5 year guarantee if fitted with Mirage II available from SBO.
Zirconia	950MPa	High strength core CAD/CAM designed and milled with feldspatic dentins and enamel layered	When maximum strength is required for full crowns or when the underlying tooth is dark.	Medium/low	When the bite is extremely close, in this situation a PFM crown is best with metal windows	Conventional cementation. E.g. Zinc phosphate, glass ionomer, modified composite Polycarbolyxylate is not recommended due to expansion. 5 year guarantee regardless of fitting system used.



i-esthetic®



Zirconia